

## TECHNICAL DATA SHEET

### GPL

### High Quality Multilayer Graphene Nanoplatelets

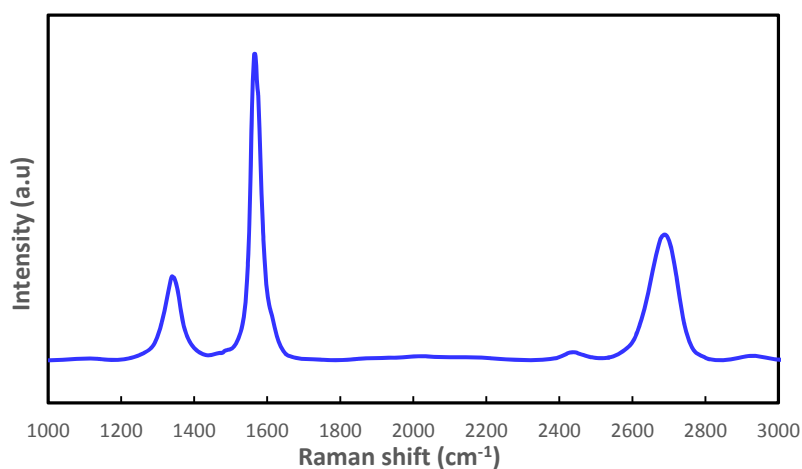
#### Product description

GrapheneTech's **GPL Graphene Nanoplatelets** products consist of high quality graphene powder based on graphene nanoplatelets. GPL is manufactured using a patented "top-down" approach exfoliation method. **GPL Graphene Nanoplatelets** can be used in a wide range of applications such as composites, paintings, conductive inks or transparent coatings.

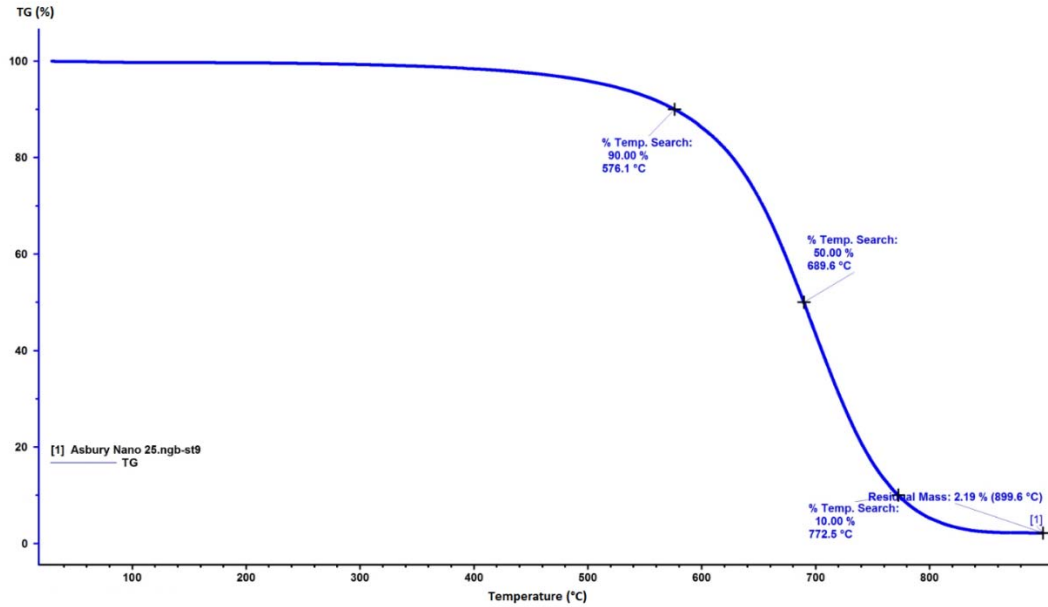
#### Technical aspects

Parameter	Specifications
Appearance	black powder
Carbon content	> 97 %
Average specific area	200 ± 20 m <sup>2</sup> /g
Lateral size	500 - 1000 nm
Nº layers	13-14

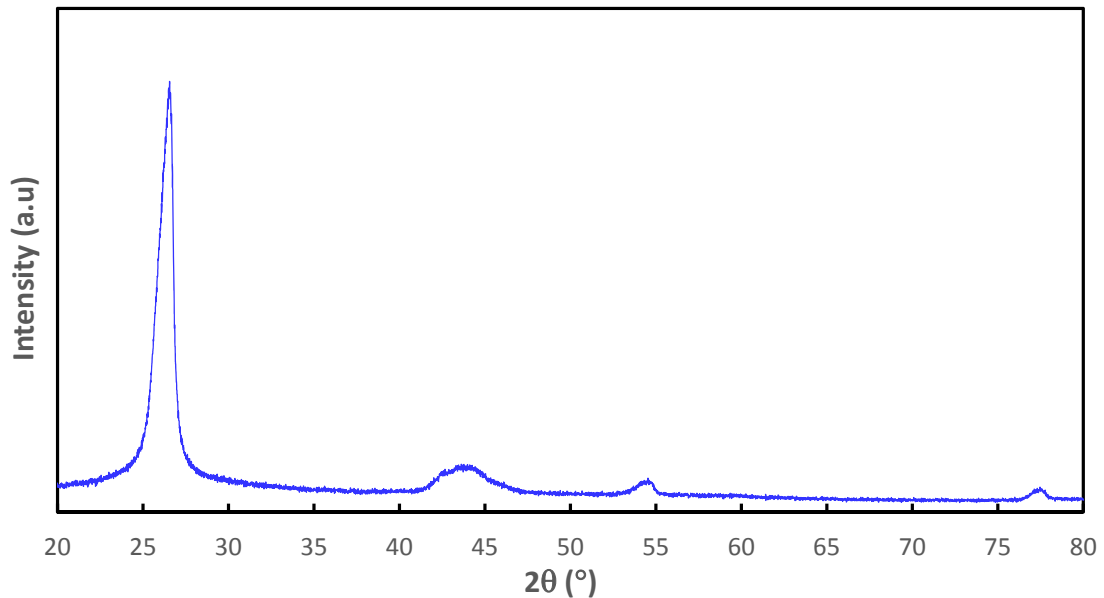
#### Characterization



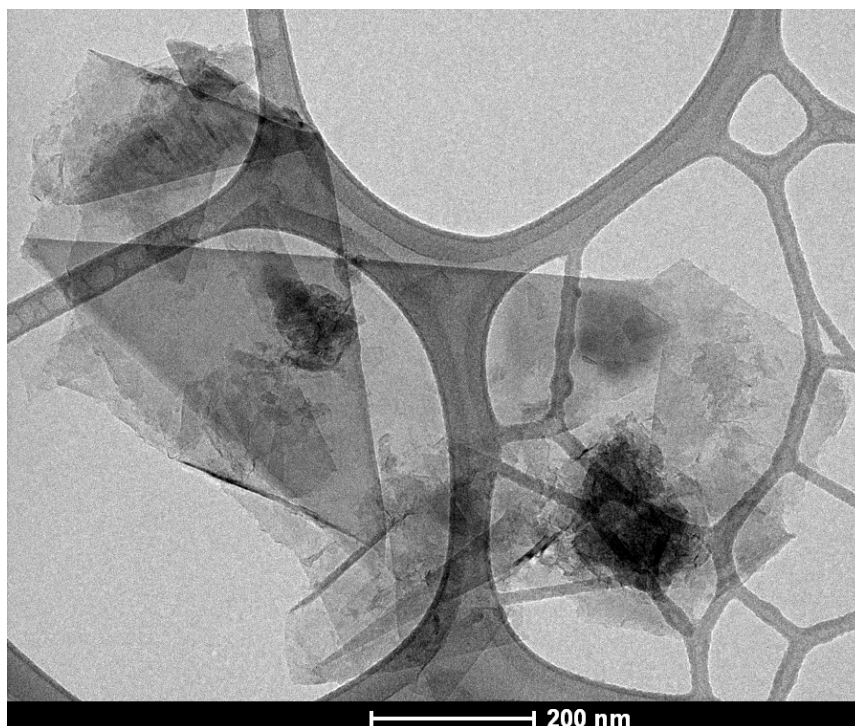
Raman patterns of GPL graphene nanoplatelets (GrapheneTech).



Thermogravimetric curve of GPL graphene nanoplatelets (GrapheneTech).



XRD spectra of GPL graphene nanoplatelets (GrapheneTech).



TEM Image of GPL graphene nanoplatelets (GrapheneTech).

*GrapheneTech S.L. considers that the information in this technical data sheet is accurate at publication time. The statement, technical data and recommendations contained herein are based on our investigation and experience. GrapheneTech does not assume any obligation or liability for the information in this technical data sheet. GrapheneTech encourages its customers to review the manufacturing process and applications from the standpoint of human health and environmental quality to ensure that this material is not utilized in ways that is not intended or tested. No warranties are given. All implemented warranties of fitness for a particular purpose are expressly excluded. Product literature and safety data sheets should be consulted prior to use. Please contact GrapheneTech for the most current technical information.*