

TECHNICAL DATA SHEET

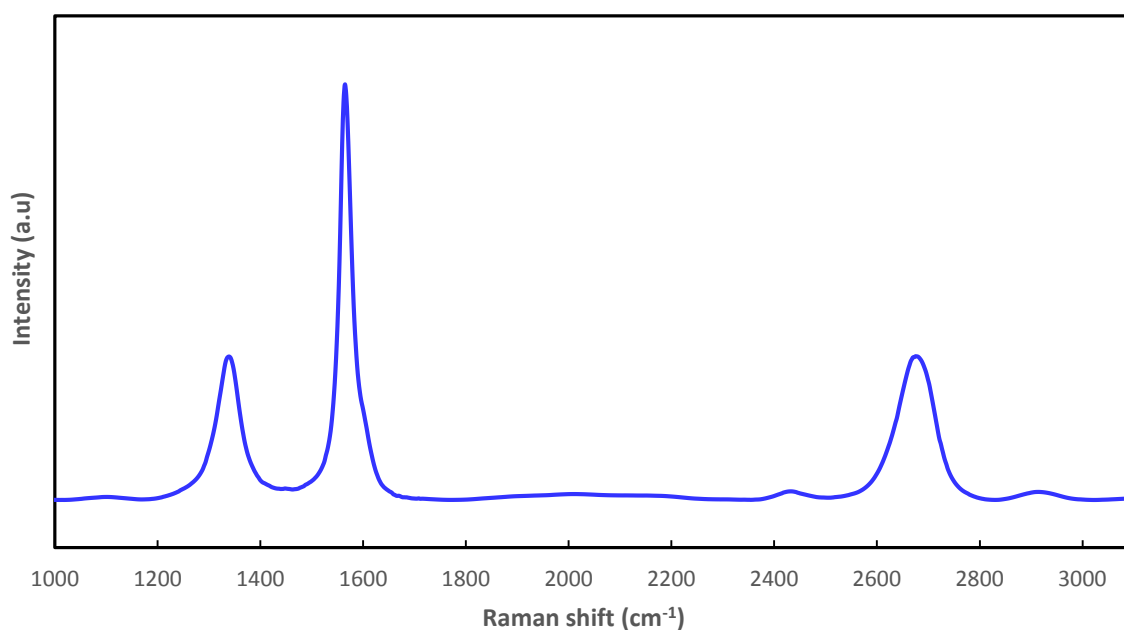
GP500 High Quality Few Layers Graphene Nanoplatelets

GrapheneTech's **GP500** product consists of high quality powder based on graphene nanoplatelets. **GP500** is manufactured by our own "top-down" method, an environmentally friendly process performed with no additives. This product can be used in a wide range of applications such as energy storage, composites, anticorrosive paintings, resins or lubricant oils.

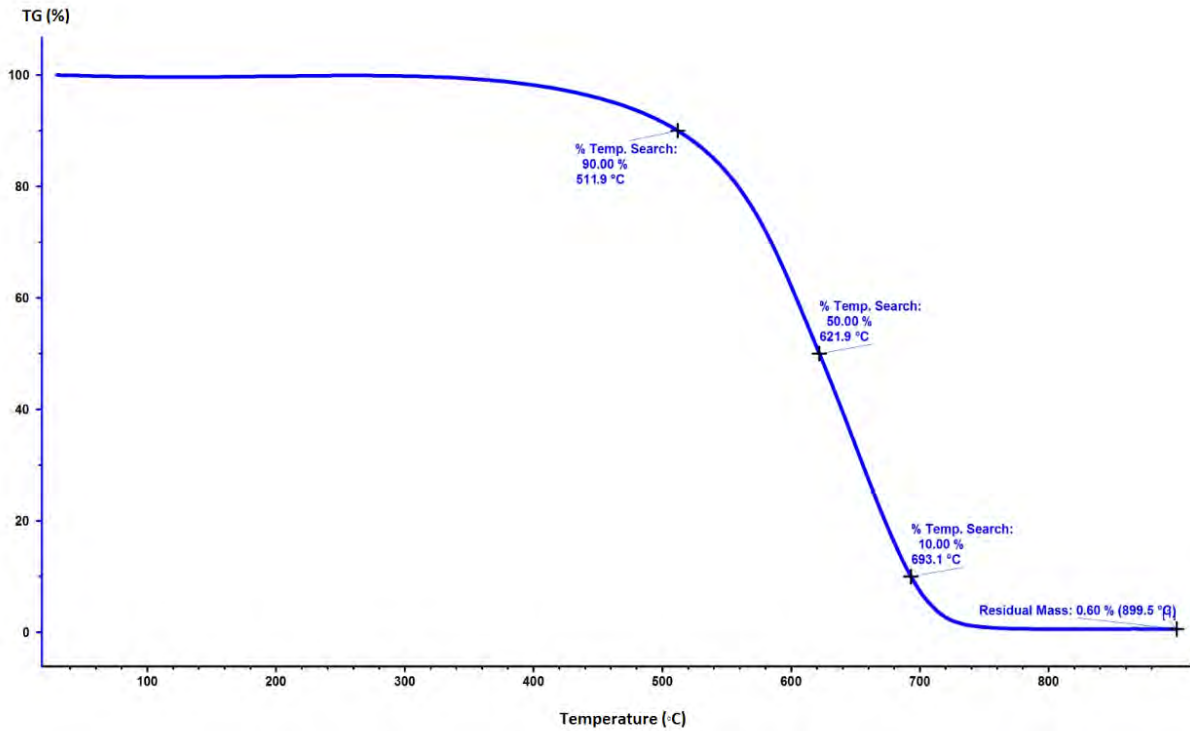
Technical specifications

Parameter	Specifications
Appearance	black powder
Relative density	0.2 g/cm ³
Carbon content	> 97%
Specific surface area	450±30 m ² /g
Lateral size	40-200 nm
Nº layers	4-7

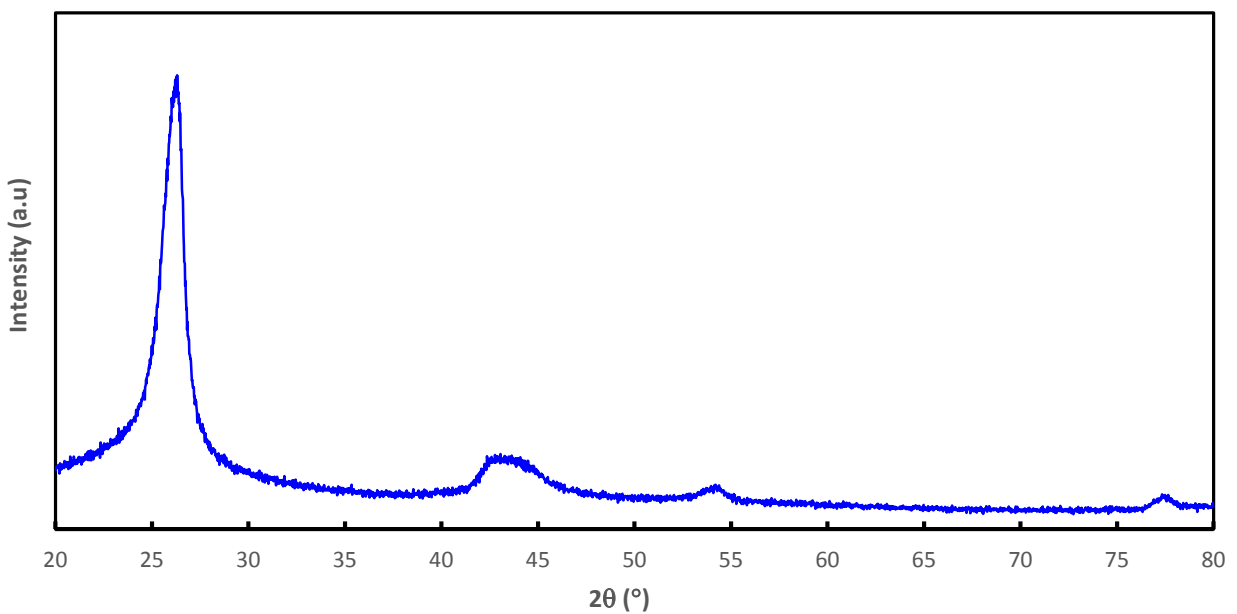
Characterization



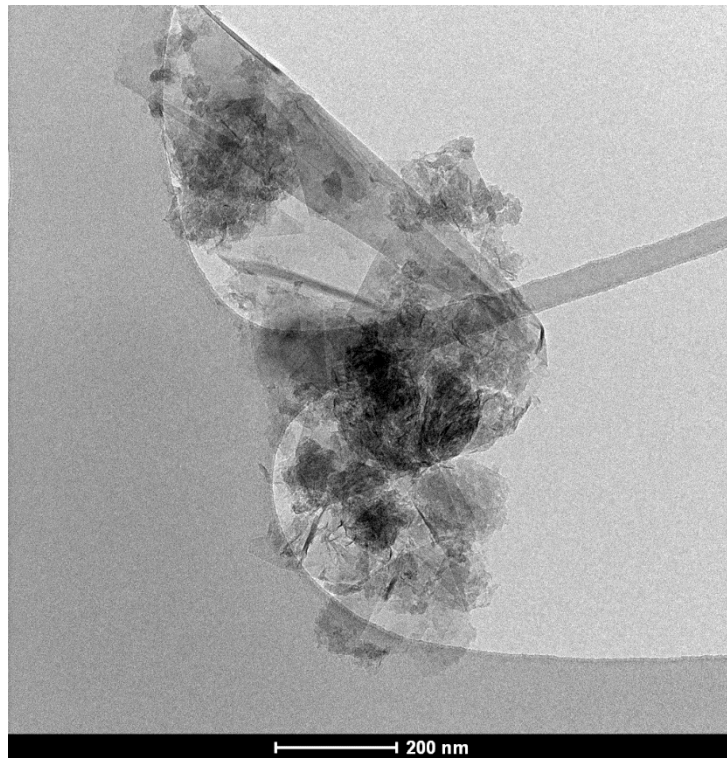
Raman patterns of GP500 graphene nanoplatelets (GrapheneTech).



Thermogravimetric curve of GP500 graphene nanoplatelets (GrapheneTech).



XRD spectra of GP500 graphene nanoplatelets (GrapheneTech).



TEM Image of GP500 graphene nanoplatelets (GrapheneTech).

Storage and Handling

Store at room temperature in a closed packing container. Preserve in a clean, dry and stable environment. Keep away from heat, sparks and flames. Otherwise, it may have an adverse effect on performance and will affect any warranties given by GrapheneTech.

Health and Safety

For safe use of this product, please review the datasheet (MSDS).

GrapheneTech S.L. considers that the information in this technical data sheet is accurate at publication time. The statement, technical data and recommendations contained herein are based on our investigation and experience. GrapheneTech does not assume any obligation or liability for the information in this technical data sheet. GrapheneTech encourages its customers to review the manufacturing process and applications from the standpoint of human health and environmental quality to ensure that this material is not utilized in ways that is not intended or tested. No warranties are given. All implemented warranties of fitness for a particular purpose are expressly excluded. Product literature and safety data sheets should be consulted prior to use. Please contact GrapheneTech for the most current technical information.